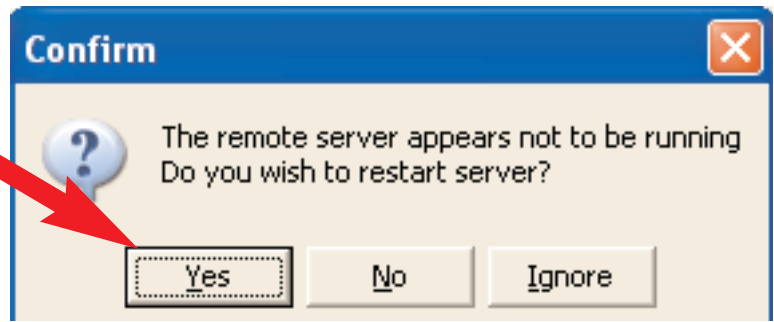


Restart Scorers

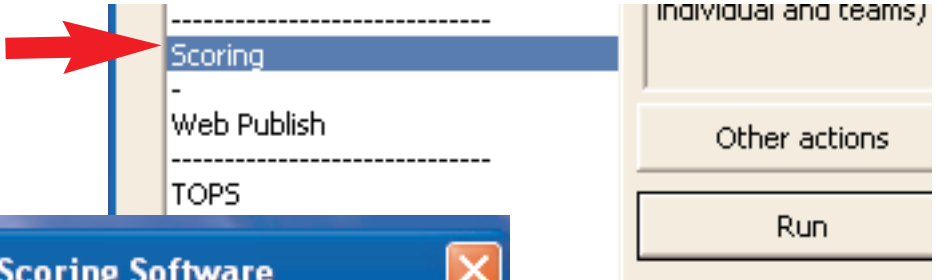
A. BridgeScorer Control accidentally closed

Click YES if/when this message is displayed

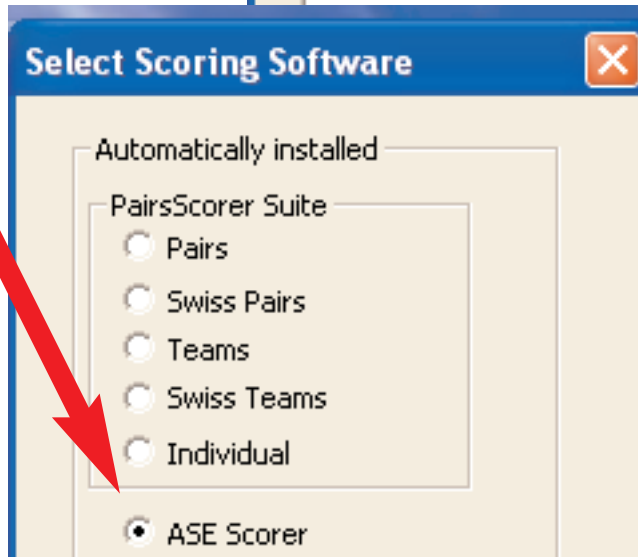


B. ASE and BridgeScorer Control accidentally closed

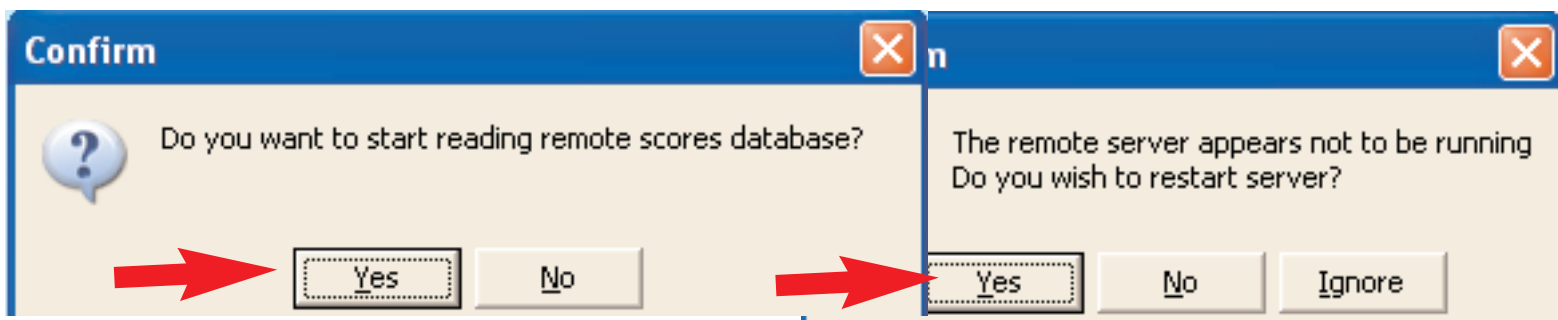
1. Run (select) SCORING in BOS



2. Select ASE



3. Say YES to these:

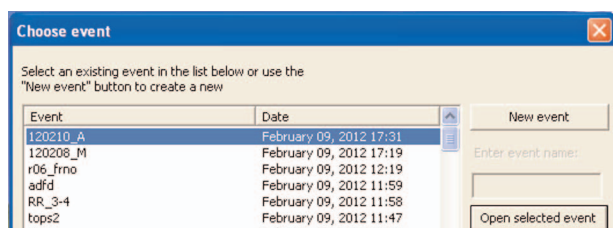


C. Everything (BOS, ASE and BridgeScorer Control) accidentally closed

1. RUN BOS



2. Open (select) the current event



3. Follow steps under B. above