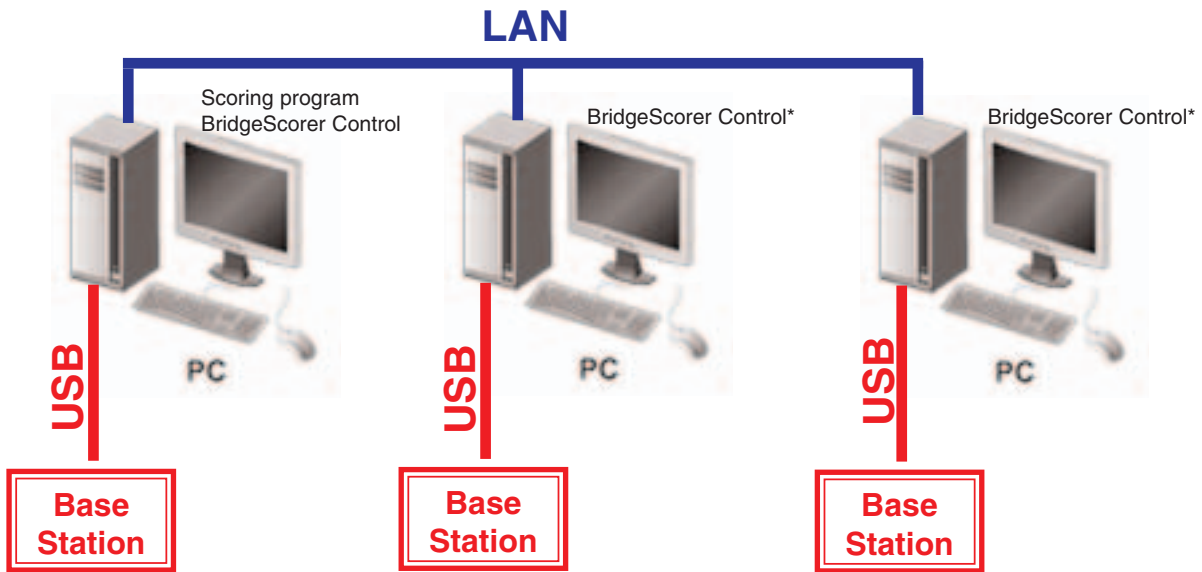


NETWORKING

Networking can be used when you use more than one Base Station.



*Or third party control software if you need to network BridgeScorers with third party hardware.

MASTER /SLAVE

The PC where you run the Scoring program will be the master and the other PCs slaves.

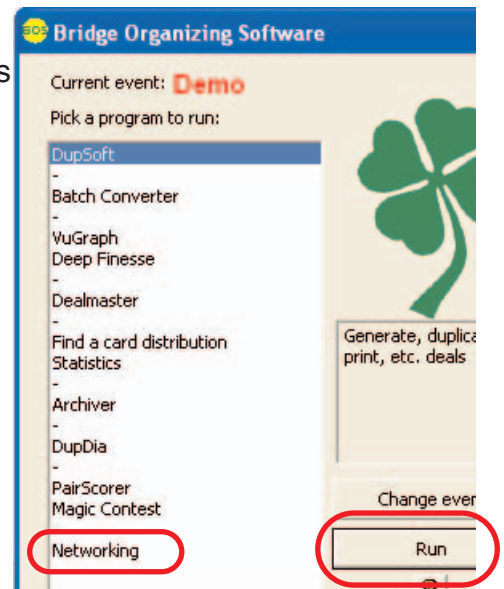
The master

The scoring software and the BridgeScorer Control is started as usual on the master PC.

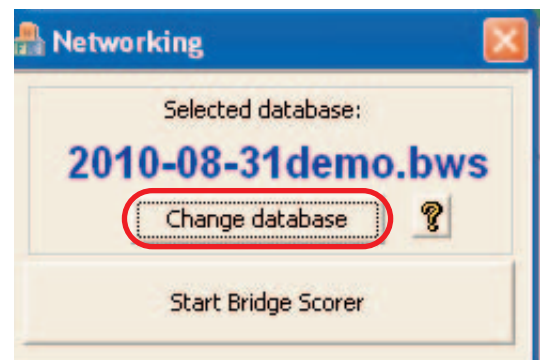
The slaves

The slave(s) can be connected to the master PC as soon as the scoring program has created a database for the event.

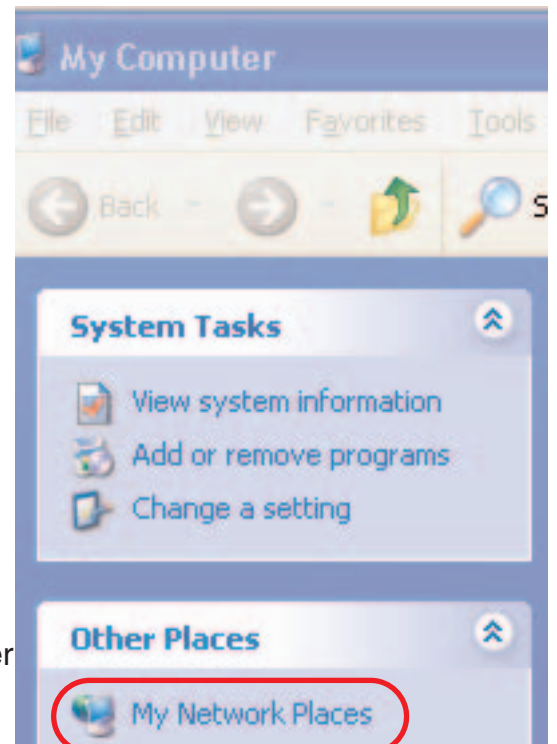
1. Select "Networking" in BOS



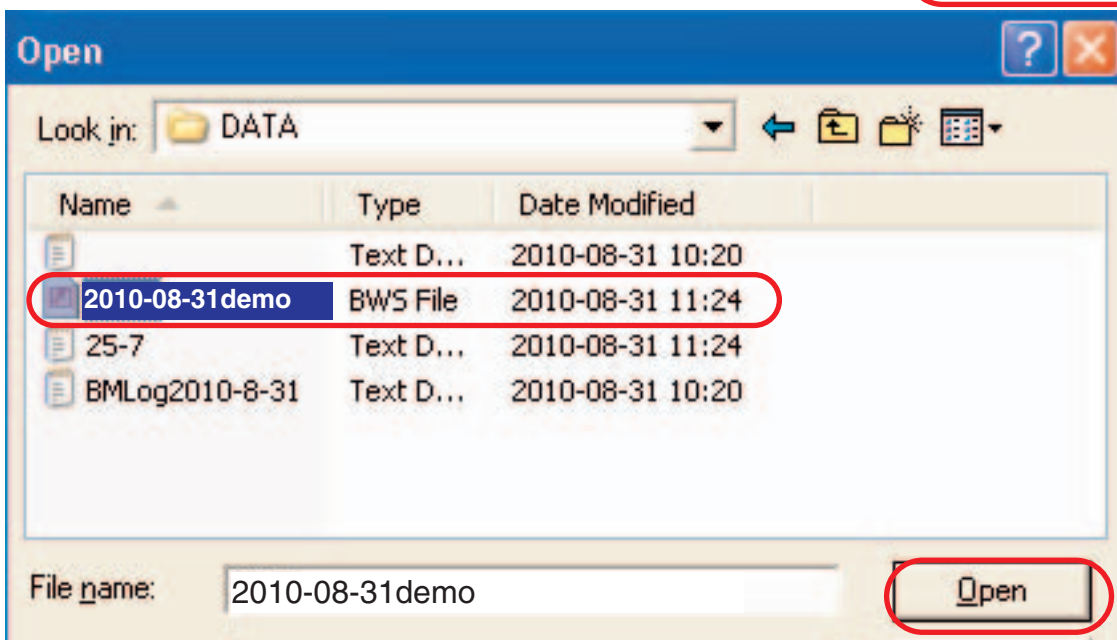
2. Click "Change database" in the dialog that appears:



3. Click “My Network Places”



4. Locate the current (just created) database on the Master PC. The default path is
C:\BOS\Events\\Data\



5. Click “Start BridgeScorer” when you have verified that the “Selected database” is the desired one.

