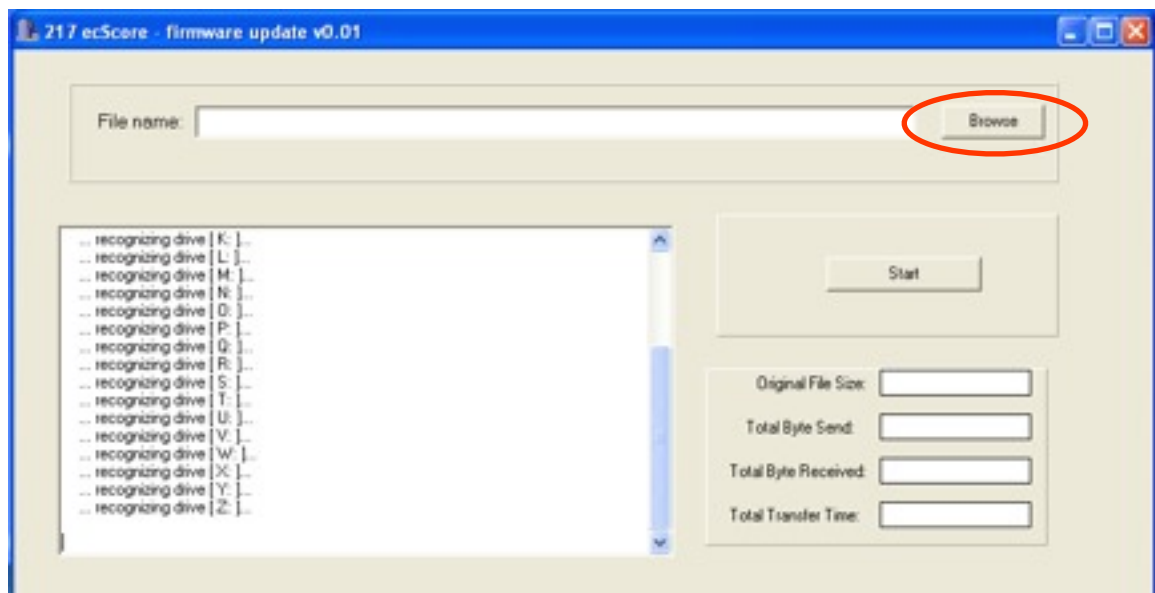


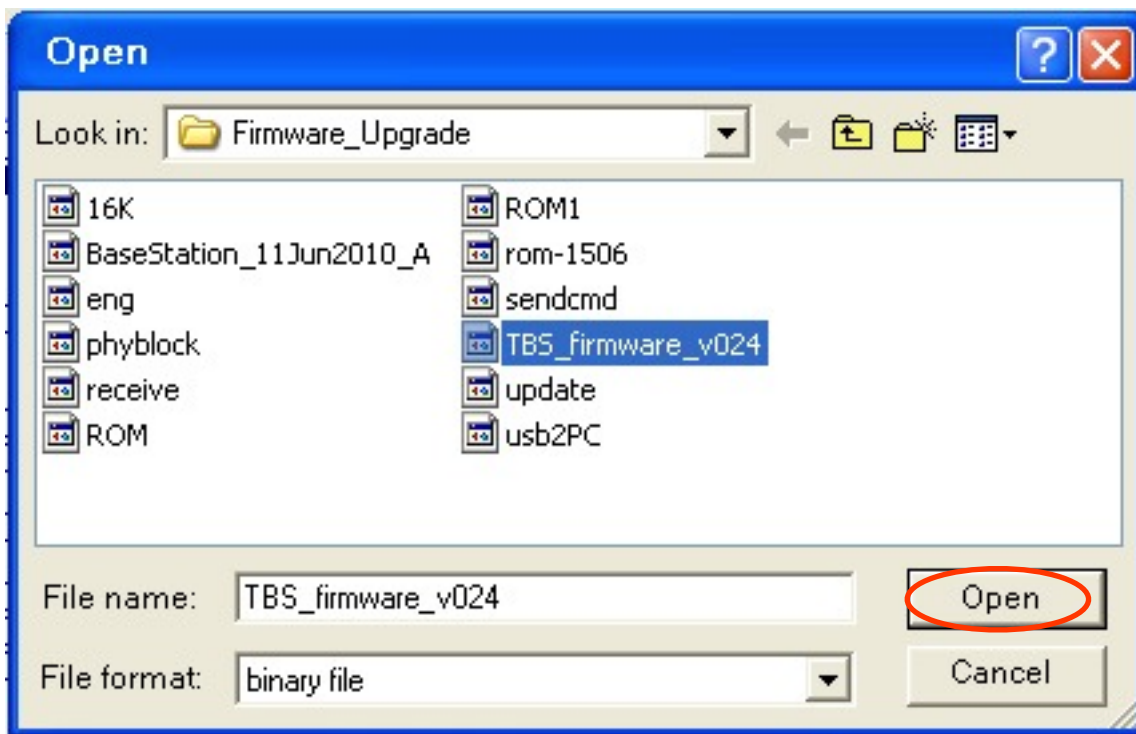
BridgeScorer firmware upgrade

1. Install BOS package, if not already done.
(Make sure that you do not deselect the BridgeScorer part.)
2. Click Windows START/Programs/BOS package/
Run BridgeScorer Firmware Update



3. Click browse

4. Choose the file TBS_firmware_v xxx (=the version to be installed) and click open



5. Press **and hold** the ON button on a tabletop BridgeScorer unit (when it is powered up). After some time the TBS will ask for a PIN.
6. Enter 0000, unless you have set another TD PIN.
7. Choose **ADMIN** and then **INSTALL**. The TBS should now show:



8. Connect the TBS to the computer (using the base station cable) and press Start.

